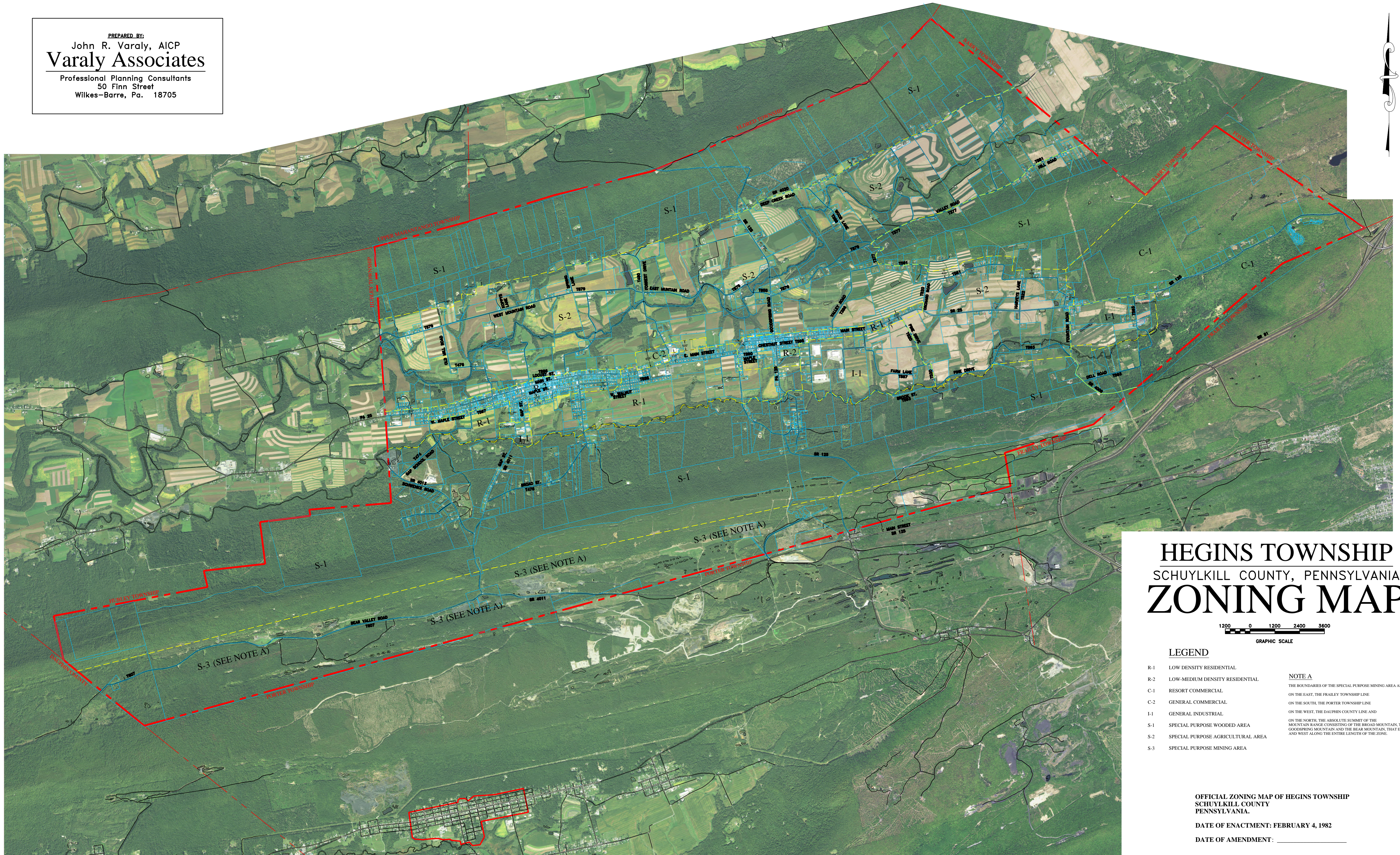
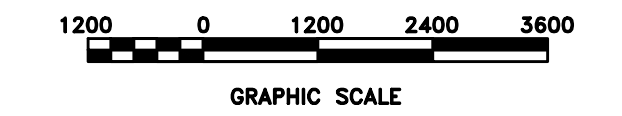


PREPARED BY:
 John R. Varaly, AICP
Varaly Associates
 Professional Planning Consultants
 50 Finn Street
 Wilkes-Barre, Pa. 18705



HEGINS TOWNSHIP SCHUYLKILL COUNTY, PENNSYLVANIA ZONING MAP



LEGEND

- | | | |
|-----|-----------------------------------|--|
| R-1 | LOW DENSITY RESIDENTIAL | NOTE A |
| R-2 | LOW-MEDIUM DENSITY RESIDENTIAL | THE BOUNDARIES OF THE SPECIAL PURPOSE MINING AREA ARE: |
| C-1 | RESORT COMMERCIAL | ON THE EAST, THE FRAILEY TOWNSHIP LINE |
| C-2 | GENERAL COMMERCIAL | ON THE SOUTH, THE PORTER TOWNSHIP LINE |
| I-1 | GENERAL INDUSTRIAL | ON THE WEST, THE DAUPHIN COUNTY LINE AND |
| S-1 | SPECIAL PURPOSE WOODED AREA | ON THE NORTH, THE ABSOLUTE SUMMIT OF THE |
| S-2 | SPECIAL PURPOSE AGRICULTURAL AREA | MOUNTAIN RANGE CONSISTING OF THE BROAD MOUNTAIN, THE |
| S-3 | SPECIAL PURPOSE MINING AREA | GOODSPRING MOUNTAIN AND THE BEAR MOUNTAIN, THAT EXTENDS EAST |
| | | AND WEST ALONG THE ENTIRE LENGTH OF THE ZONE. |

OFFICIAL ZONING MAP OF HEGINS TOWNSHIP
 SCHUYLKILL COUNTY
 PENNSYLVANIA.
 DATE OF ENACTMENT: FEBRUARY 4, 1982
 DATE OF AMENDMENT: _____